

TECE wall-mounted floor drain with Webertec Foliesystem

Execution

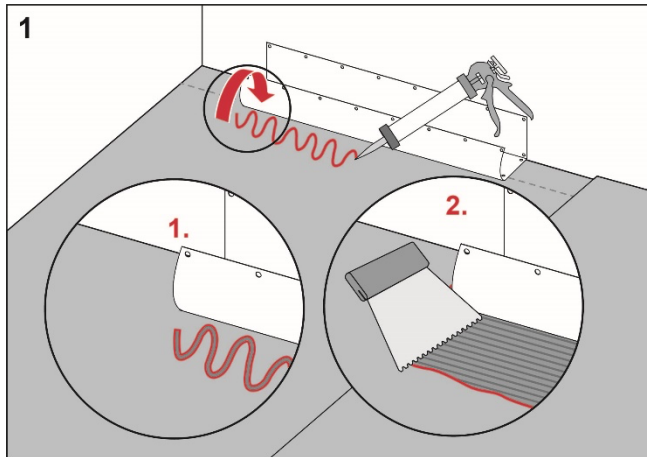
Install the TECE floor drain close to the wall in accordance with the instructions from TECE.

Preparation

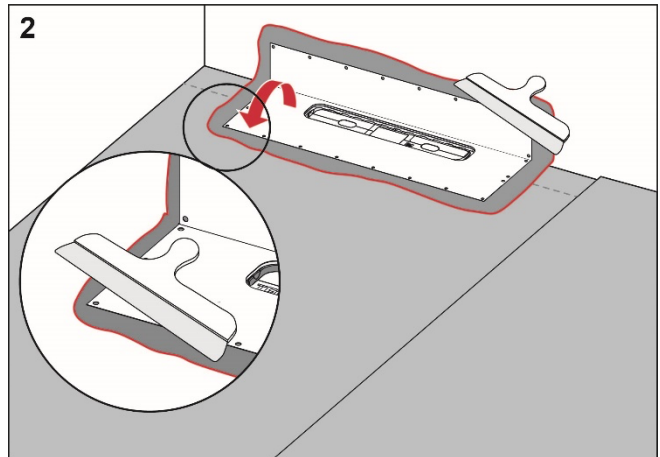
Carefully check the factory-fitted drain collar. If it is damaged, the collar should be replaced.

Procedure

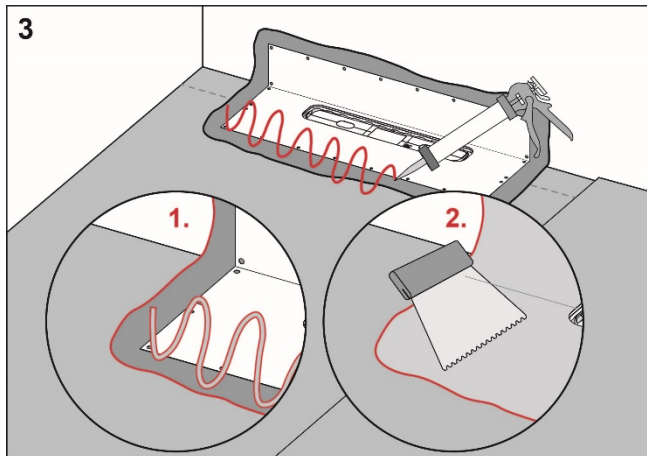
In the work description below, Webertec has been removed from the product name. E.g. Webertec foil is referred to as foil.



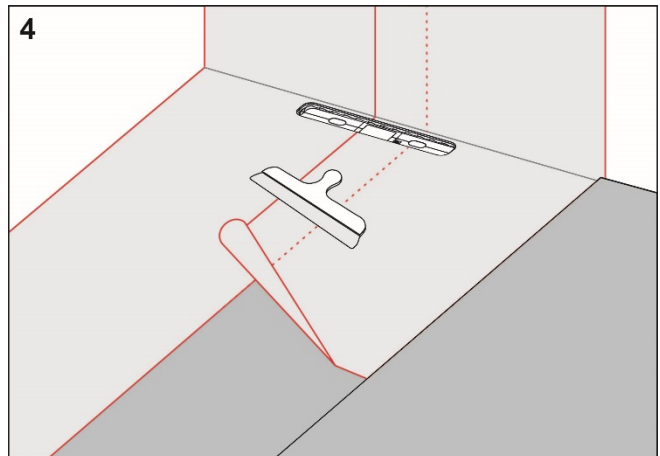
Apply accessory adhesive or 2K foil and joint adhesive to the floor and wall areas which the drain collar will cover. Spread the adhesive with a fine-toothed adhesive spreader.



Unfold the collar on the floor and wall. Press the collar firmly into place and ensure that no wrinkles or blisters occur.



Apply 2K foil and joint adhesive or accessory adhesive at least 50 mm on the drain collar. Apply membrane and foil adhesive or 2K foil and joint adhesive to the rest of the floor and wall area.



Install the foil and overlap the drain collar by a minimum of 50 mm. Seal all seams with 2K foil and joint adhesive or membrane and foil glue.

**RI
SE**

C900686
C900687

weber
SAINT-GOBAIN

For more information about
Weber Tec Foliesystem:
www.se.weber

Complies with the
Trade Rules of the Swedish Ceramic Tile
Council for Wet Areas
BBV 21:1