

## TECE wall-mounted floor drain with Sopro AEB 815 Tätskiktsfolie

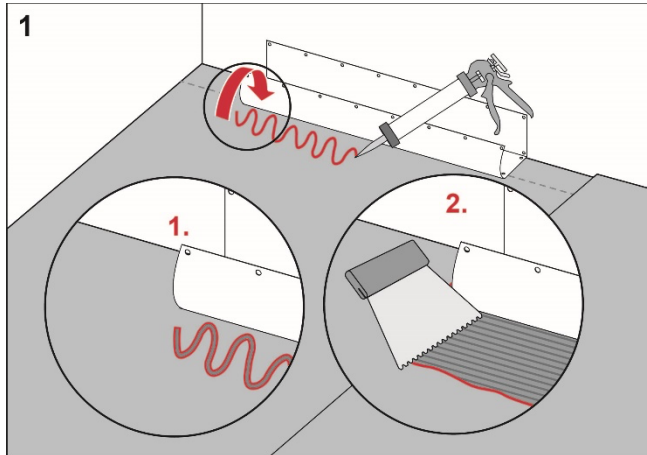
### Execution

Install the TECE floor drain close to the wall in accordance with the instructions from TECE.

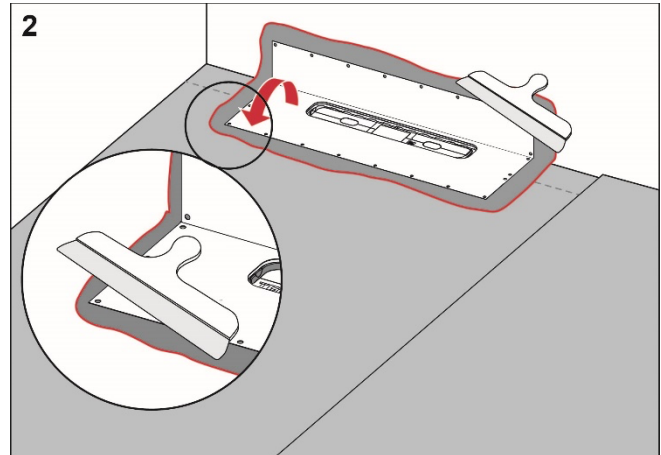
### Preparation

Carefully check the factory-fitted drain collar. If it is damaged, the collar should be replaced.

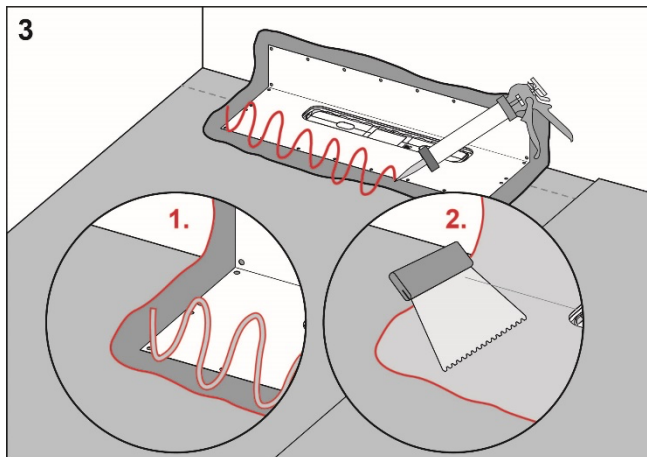
### Procedure



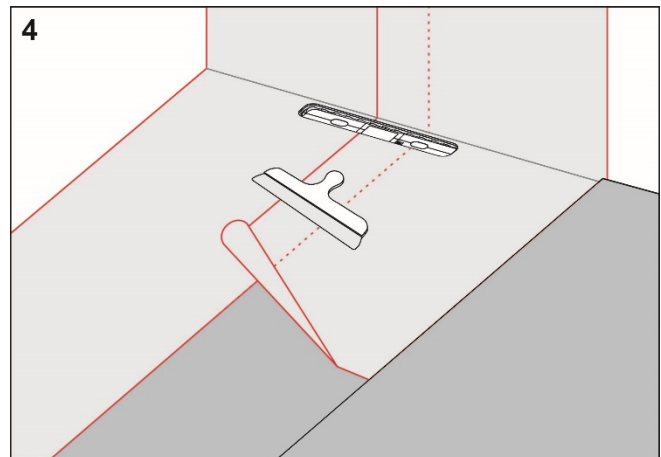
Apply Sopro Rocofix 818 mounting adhesive to the floor and wall areas which the drain collar will cover. Spread the adhesive with a fine-toothed adhesive spreader.



Unfold the collar on the floor and wall. Carefully smooth out the collar and ensure that no wrinkles or blisters occur.



Apply Sopro FDK 415 fixing adhesive and sealant on the drain collar and to the rest of the floor and wall area.



Install Sopro Folie and overlap the drain collar by a minimum of 50 mm. Seal all seams with Sopro FDK 415 fixing adhesive and sealant.

**RI  
SE**

C900686  
C900687

**Sopro**  
Byggkemi

For more information about Sopro  
AEB 815 Tätskiktsfolie:  
[www.sopro.se](http://www.sopro.se)

Complies with the  
Trade Rules of the Swedish Ceramic Tile  
Council for Wet Areas  
BBV 21:1