

TECE wall-mounted floor drain with Schönox WSF

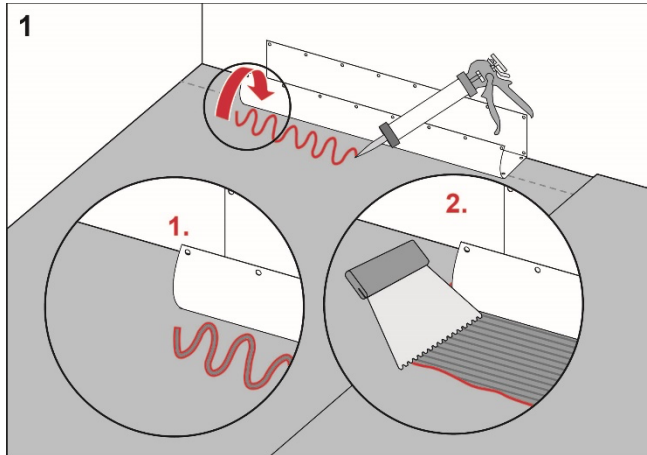
Execution

Install the TECE floor drain close to the wall in accordance with the instructions from TECE.

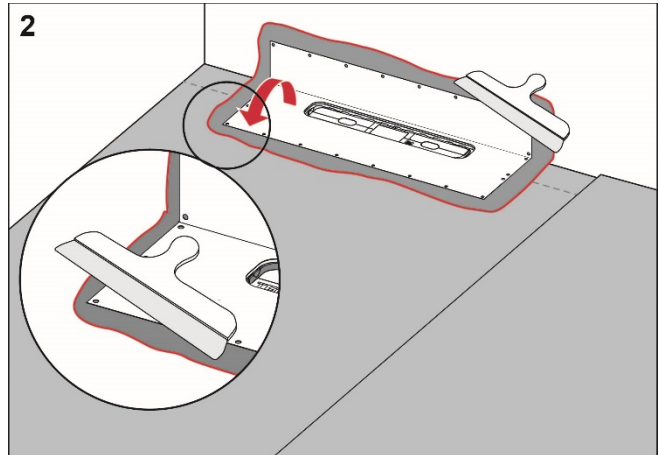
Preparation

Carefully check the factory-fitted drain collar. If it is damaged, the collar should be replaced.

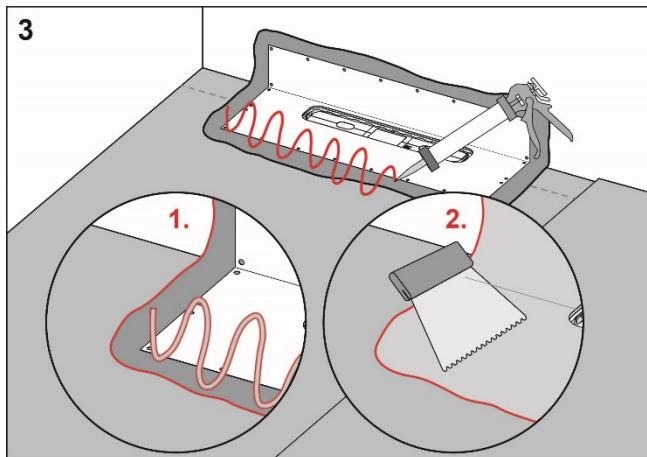
Procedure



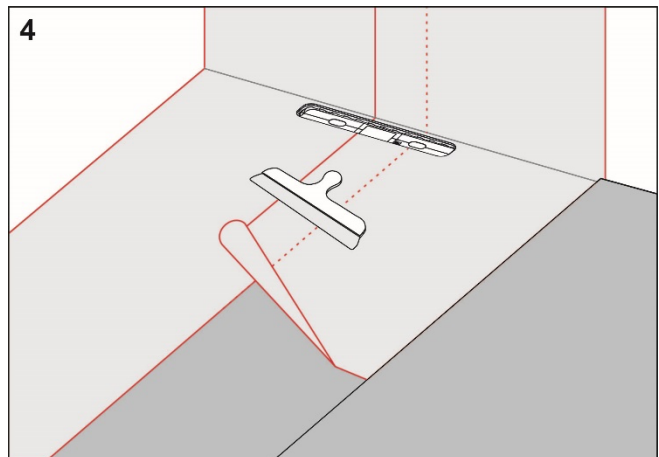
Apply Wetstop Foilseal to the floor and wall areas which the drain collar will cover. Spread the adhesive with a fine-toothed adhesive spreader.



Unfold the collar on the floor and wall. Carefully smooth out the collar and ensure that no wrinkles or blisters occur.



Apply Wetstop Foilseal on the drain collar and Schönox iFIX or HA to the rest of the floor and wall area.



Install Schönox Folie and overlap the drain collar by a minimum of 50 mm. Seal all seams with Schönox iFIX or Schönox HA.

RI-SE

C900686
C900687

SCHÖNOX
A SIKA BRAND

For more information about
Schönox:
www.schonox.com/en/

Complies with the
Trade Rules of the Swedish Ceramic Tile
Council for Wet Areas
BBV 21:1