

TECE wall-mounted floor drain with Midun Våtrumsfolie

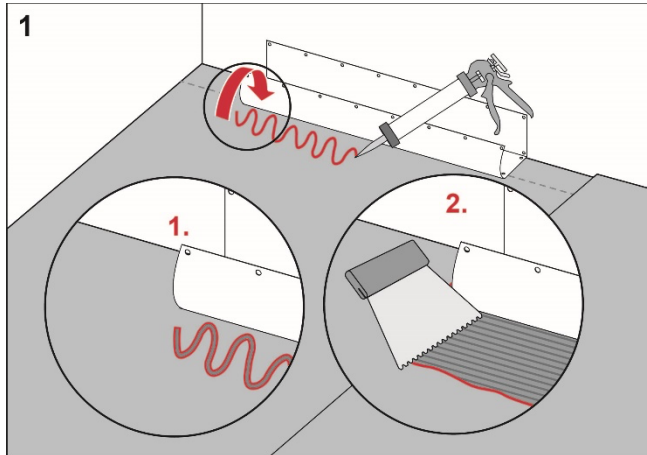
Execution

Install the TECE floor drain close to the wall in accordance with the instructions from TECE.

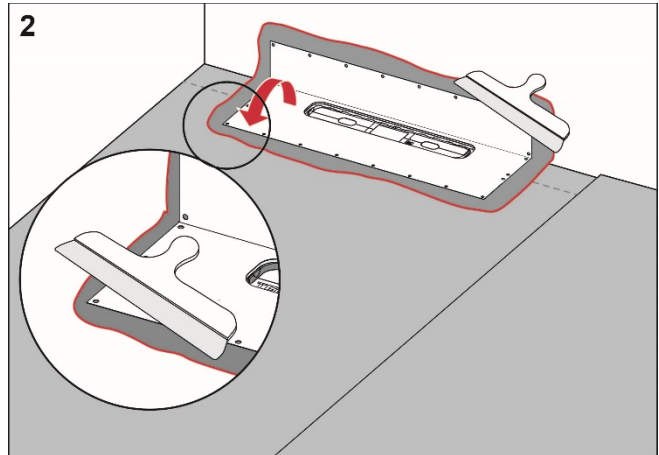
Preparation

Carefully check the factory-fitted drain collar. If it is damaged, the collar should be replaced.

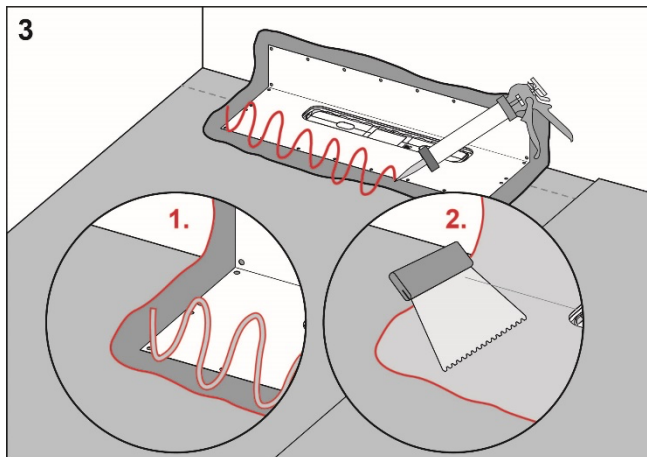
Procedure



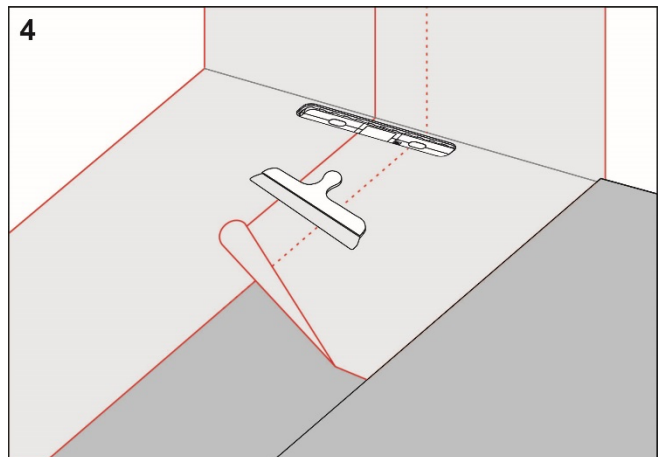
Apply Midun Skarvlim Våtrum to the floor and wall areas which the drain collar will cover. Spread the adhesive with a fine-toothed adhesive spreader.



Unfold the collar on the floor and wall. Carefully smooth out the collar and ensure that no wrinkles or blisters occur.



Apply Midun Skarvlim Våtrum on the drain collar and Midun Tätmembran to the rest of the floor and wall area.



Install Midun Våtrumsfolie and overlap the drain collar by a minimum of 35 mm. Seal all seams with Midun Tätmembran.

**RI
SE**

C900686
C900687

midun®

For more information about Midun
Våtrumsfolie:
www.byggmax.se

Complies with the
Trade Rules of the Swedish Ceramic Tile
Council for Wet Areas
BBV 21:1