

TECE wall-mounted floor drain with mira 4500 vapourmat 100

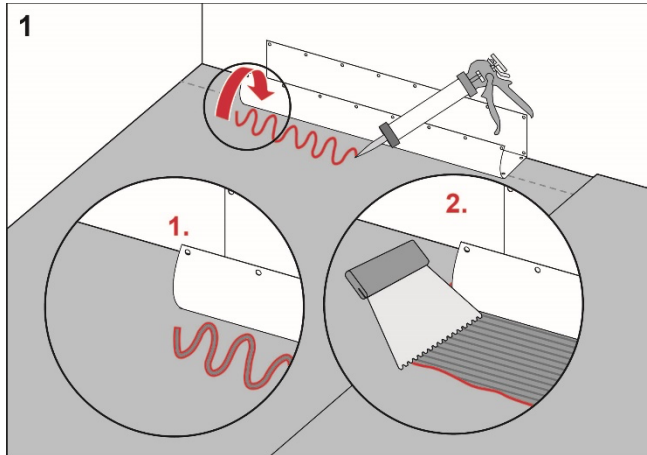
Execution

Install the TECE floor drain close to the wall in accordance with the instructions from TECE.

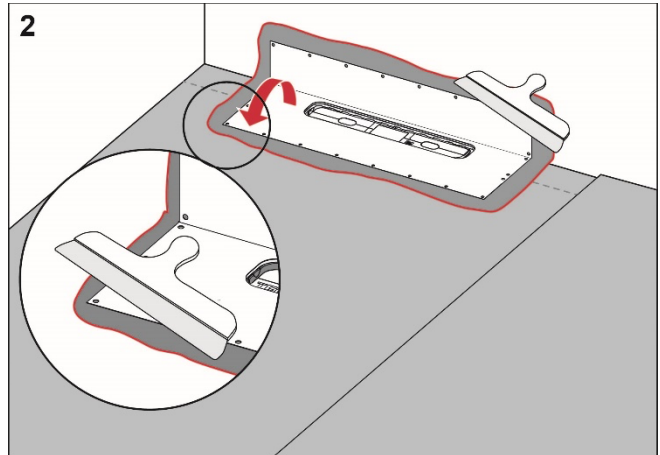
Preparation

Carefully check the factory-fitted drain collar. If it is damaged, the collar should be replaced.

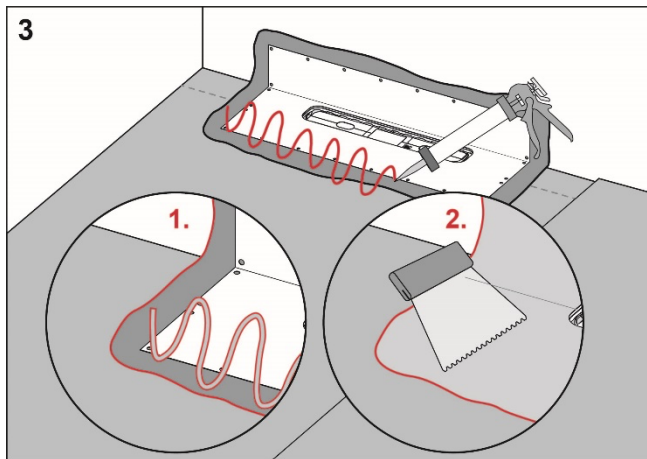
Procedure



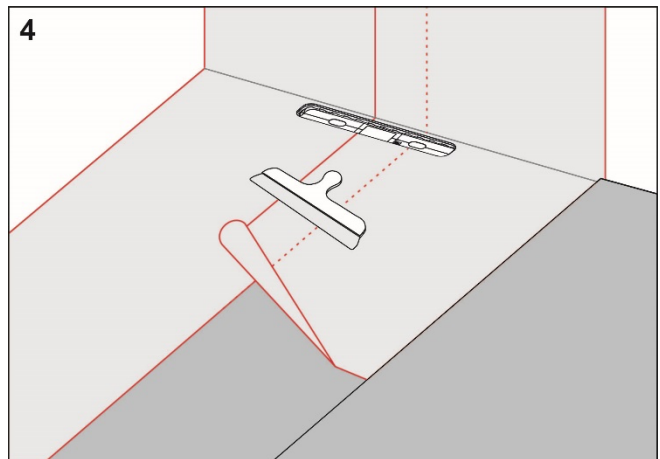
Apply mira 3690 one-seal or mira 4630 aqua flex 2K to the floor and wall areas which the drain collar will cover. Spread the adhesive with a fine-toothed adhesive spreader.



Unfold the collar on the floor and wall. Carefully smooth out the collar and ensure that no wrinkles or blisters occur.



Apply mira 3690 one-seal or mira 4630 aqua flex 2K on the drain collar and mira 4400 multicoat or 4630 aqua flex 2K to the rest of the floor and wall area.



Install mira 4500 vapourmat 100 Folie and overlap the drain collar by a minimum of 50 mm. Seal all seams with mira 4400 multicoat or mira 4630 aqua flex 2K.

**RI
SE**

C900686
C900687

mira

For more information about mira
4500 vapourmat 100:
www.mira.eu.com

Complies with the
Trade Rules of the Swedish Ceramic Tile
Council for Wet Areas
BBV 21:1