

## TECE wall-mounted floor drain with WP90, WP140 and WP200

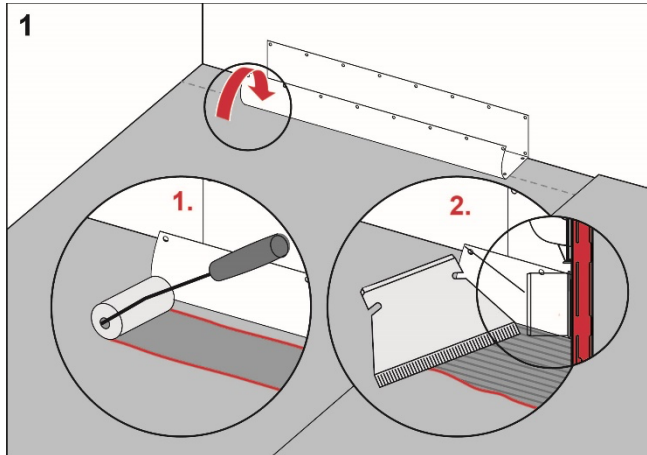
### Execution

Install the TECE floor drain close to the wall in accordance with the instructions from TECE.

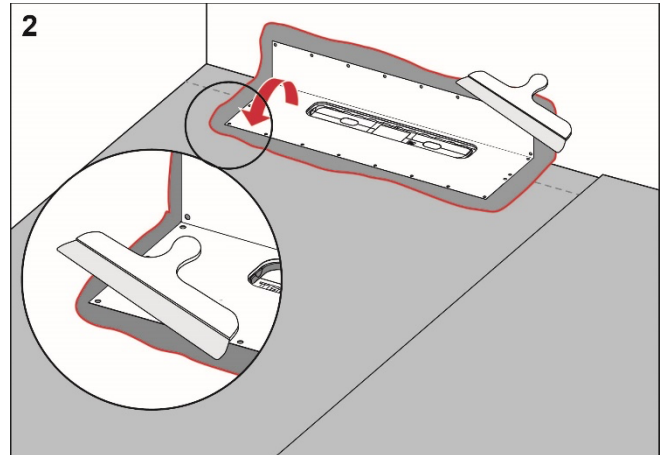
### Preparation

Carefully check the factory-fitted drain collar. If it is damaged, the collar should be replaced.

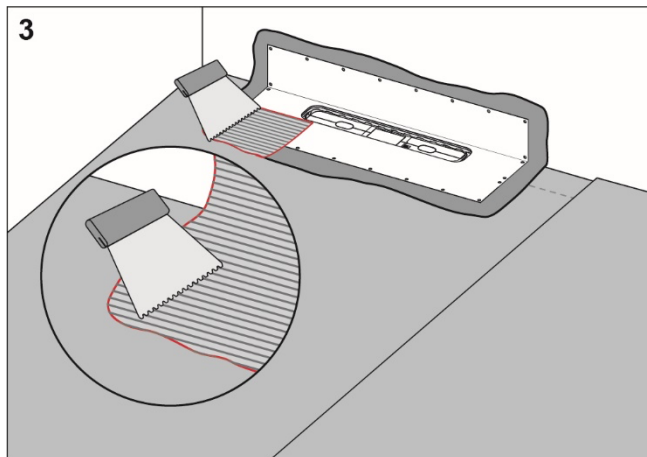
### Procedure



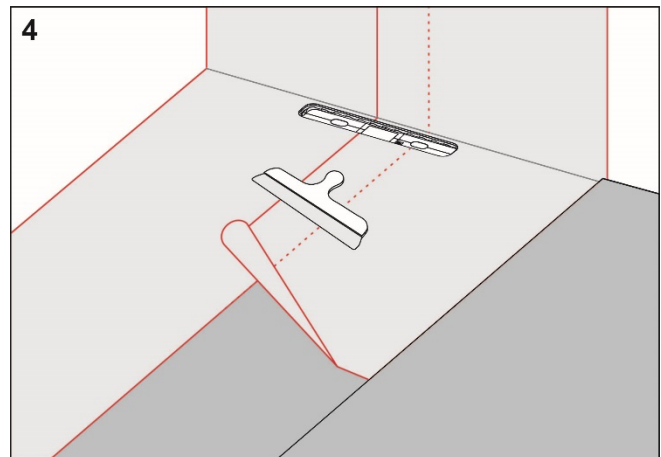
Apply Mapei Mapeguard WP Adhesive on the floor and wall areas which the drain collar will cover. Spread the adhesive with a brush, roller or adhesive spreader.



Unfold the collar on the floor and wall. Carefully smooth out the collar and ensure that no wrinkles or blisters occur.



Apply Mapei Mapeguard WP Adhesive on the drain collar and on the rest of the floor and wall area.



Install Mapei WP90, WP140 or WP200 Folie and overlap the drain collar by a minimum of 50 mm. Seal all seams with Mapei Mapeguard WP Adhesive.

**RI  
SE**

C900686  
C900687



For more information about Mapei  
WP90 and WP200:  
[www.mapei.se](http://www.mapei.se)

Complies with the  
Trade Rules of the Swedish Ceramic Tile  
Council for Wet Areas  
BBV 21:1