

TECE wall-mounted floor drain with Kiilto Kerasafe+ and Keraseal

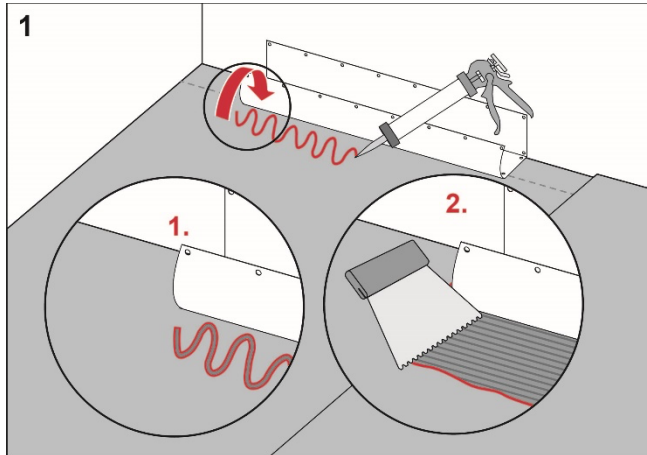
Execution

Install the TECE floor drain close to the wall in accordance with the instructions from TECE.

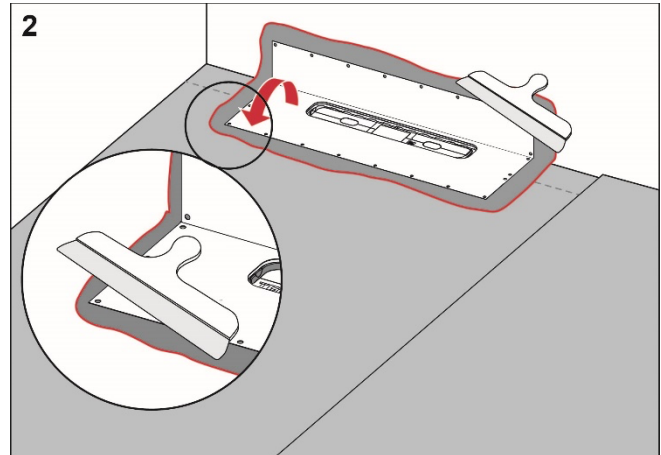
Preparation

Carefully check the factory-fitted drain collar. If it is damaged, the collar should be replaced.

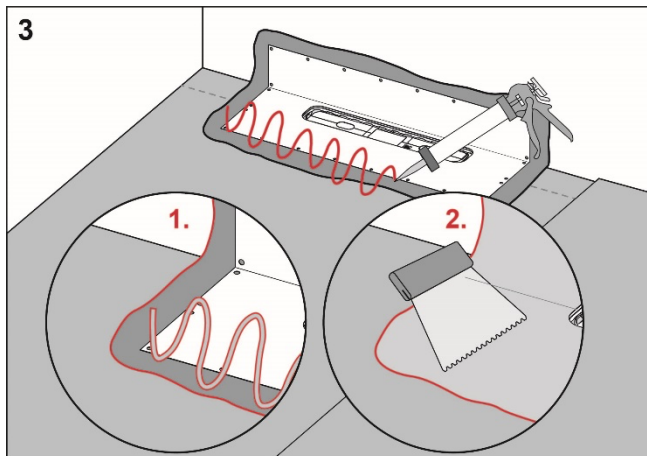
Procedure



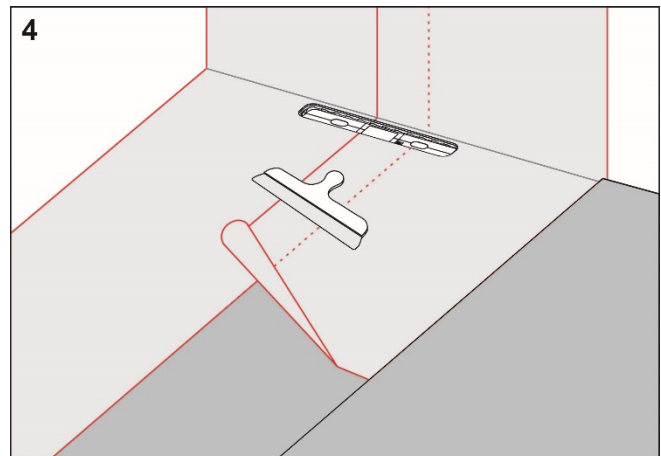
Apply Kiilto K2 or M1000eco to the floor and wall areas which the drain collar will cover. Spread the adhesive with a fine-toothed adhesive spreader.



Unfold the collar on the floor and wall. Carefully smooth out the collar and ensure that no wrinkles or blisters occur.



Apply Kiilto Keraseal on the drain collar and Kiilto K2 or Kiilto M1000Eco to the rest of the floor and wall area.



Install Kiilto Folie in accordance with the instructions from Kiilto.

**RI
SE**

C900686
C900687



For more information about Kiilto
Kerasafe+ and Keraseal:
www.kiilto.com

Complies with the
Trade Rules of the Swedish Ceramic Tile
Council for Wet Areas
BBV 21:1