

TECE wall-mounted floor drain with KERAKOLL Kerablock TEX 750

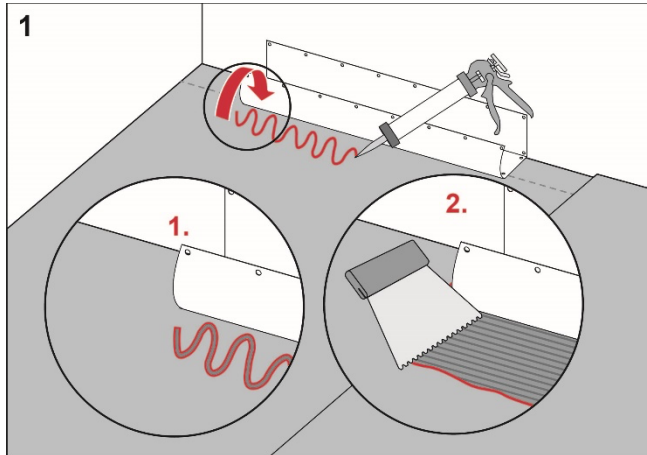
Execution

Install the TECE floor drain close to the wall in accordance with the instructions from TECE.

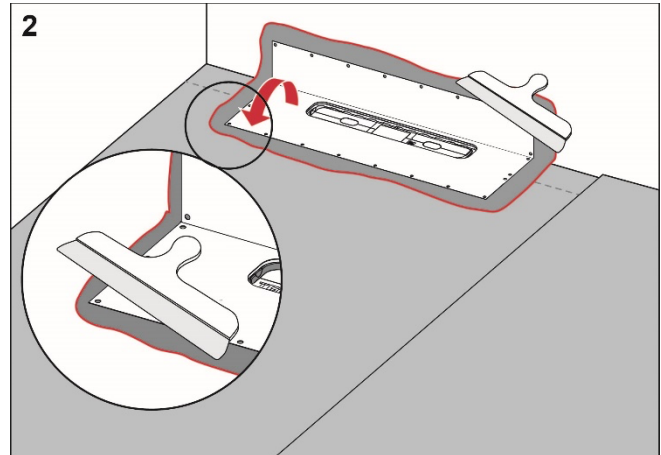
Preparation

Carefully check the factory-fitted drain collar. If it is damaged, the collar should be replaced.

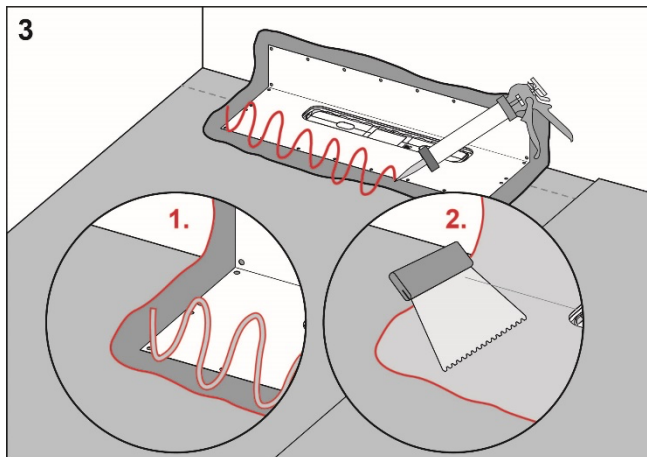
Procedure



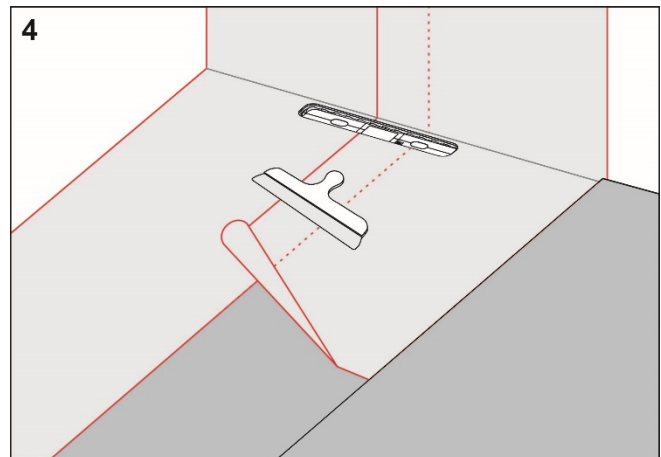
Apply Kerakoll Aquastop Nanosil to the floor and wall areas which the drain collar will cover. Spread the adhesive with a fine-toothed adhesive spreader.



Unfold the collar on the floor and wall. Carefully smooth out the collar and ensure that no wrinkles or blisters occur.



Apply Kerakoll Aquastop Nanosil on the drain collar and Kerakoll Nanodefense Eco to the rest of the floor and wall area.



Install Kerakoll Folie and overlap the drain collar by a minimum of 50 mm. Seal all seams with Kerakoll Nanodefense Eco.

RI-SE

C900686
C900687

KERAKOLL
The GreenBuilding Company

For more information about
Kerakoll Kerablock TEX 750:
www.kerakoll.com

Complies with the
Trade Rules of the Swedish Ceramic Tile
Council for Wet Areas
BBV 21:1