

TECE wall-mounted floor drain with GKHero Pro Våtrumsfolie

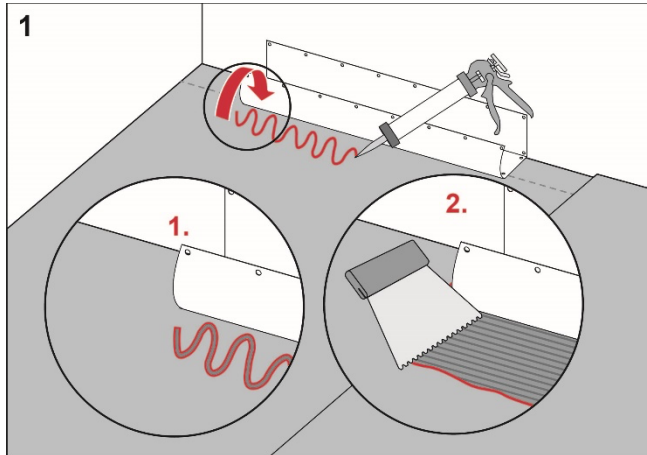
Execution

Install the TECE floor drain close to the wall in accordance with the instructions from TECE.

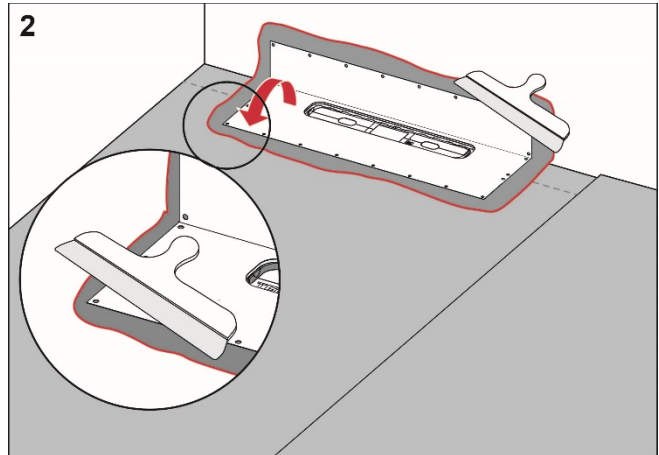
Preparation

Carefully check the factory-fitted drain collar. If it is damaged, the collar should be replaced.

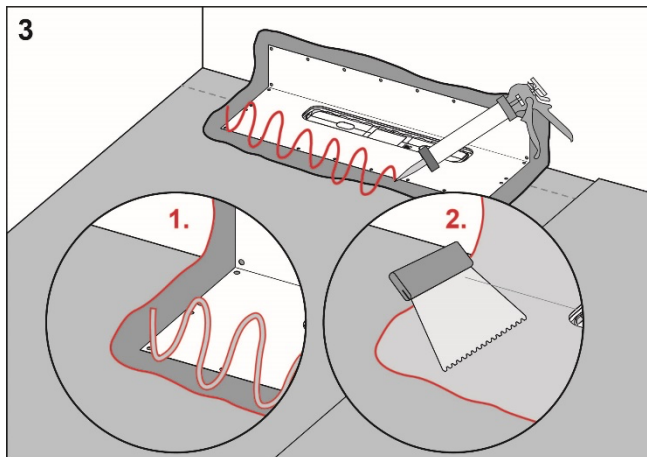
Procedure



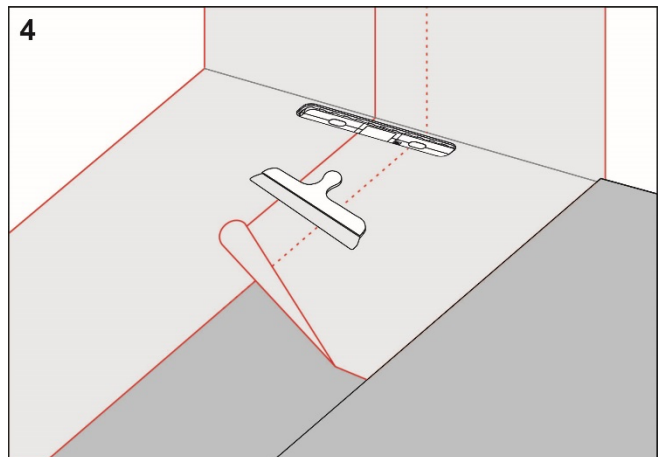
Apply GKHero Pro Folielim to the floor and wall areas which the drain collar will cover. Spread the adhesive with a fine-toothed adhesive spreader.



Unfold the collar on the floor and wall. Carefully smooth out the collar and ensure that no wrinkles or blisters occur.



Apply GKHero Pro Folielim on the drain collar and GKHero Pro Våtrumsmembran to the rest of the floor and wall area.



Install GKHero Pro Våtrumsfolie and overlap the drain collar by a minimum of 35 mm. Seal all seams with GKHero Pro Våtrumsmembran.

**RI
SE**

C900686
C900687

Göteborgs
KAKELHUS

For more information about
GKHero Pro Våtrumsfolie:
www.gkheropro.se

Complies with the
Trade Rules of the Swedish Ceramic Tile
Council for Wet Areas
BBV 21:1