

TECE wall-mounted floor drain with Centro TM#System

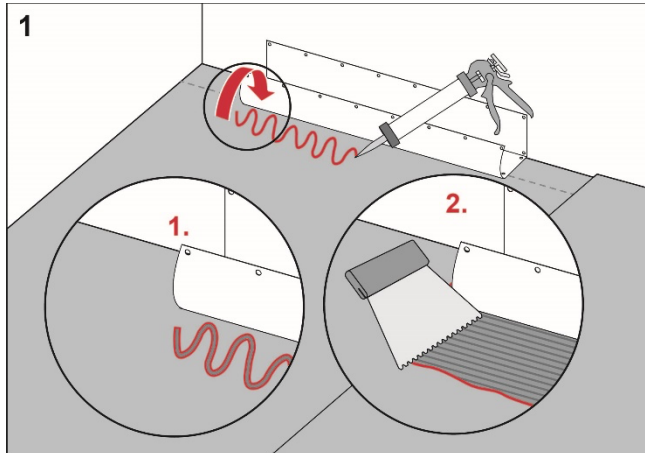
Execution

Install the TECE floor drain close to the wall in accordance with the instructions from TECE.

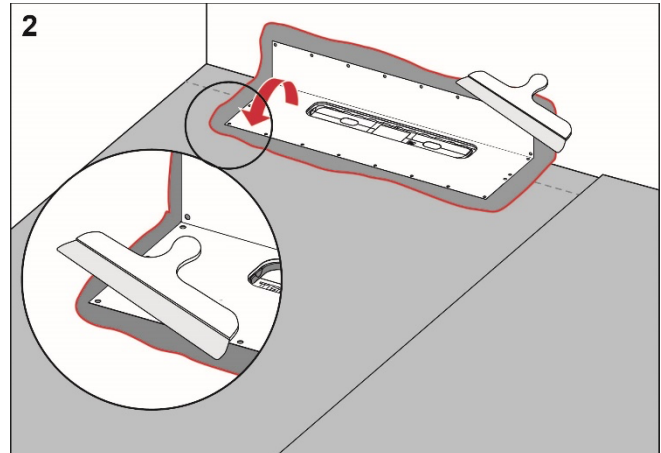
Preparation

Carefully check the factory-fitted drain collar. If it is damaged, the collar should be replaced.

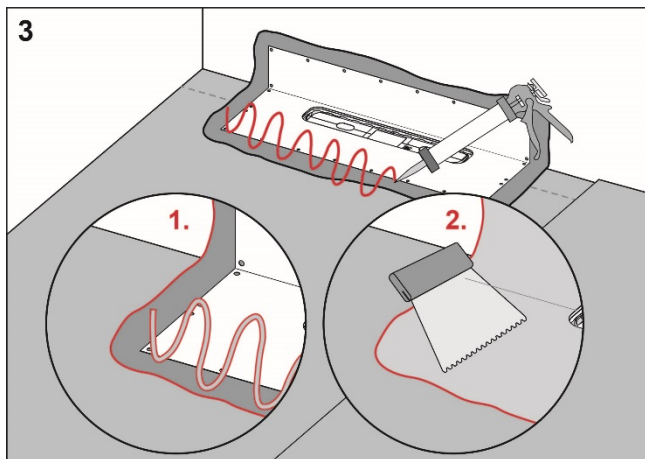
Procedure



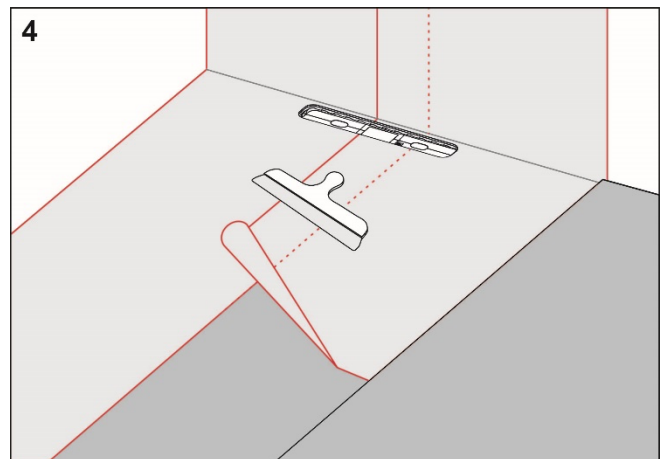
Apply Centro TM#Folielim to the floor and wall areas which the drain collar will cover. Spread the adhesive with a fine-toothed adhesive spreader.



Unfold the collar on the floor and wall. Carefully smooth out the collar and ensure that no wrinkles or blisters occur.



Apply Centro TM#Folielim on the drain collar and Centro TM#Tätmembran to the rest of the floor and wall area.



Install Centro TM#Folie and overlap the drain collar by a minimum of 35 mm. Seal all seams with Centro TM#Tätmembran.

**RI
SE**

C900686
C900687



For more information about
Centro TM#System:
www.centro.se

Complies with the
Trade Rules of the Swedish Ceramic Tile
Council for Wet Areas
BBV 21:1