

TECE wall-mounted floor drain with CC Höganäs Foliesystem G12b / V12-3b

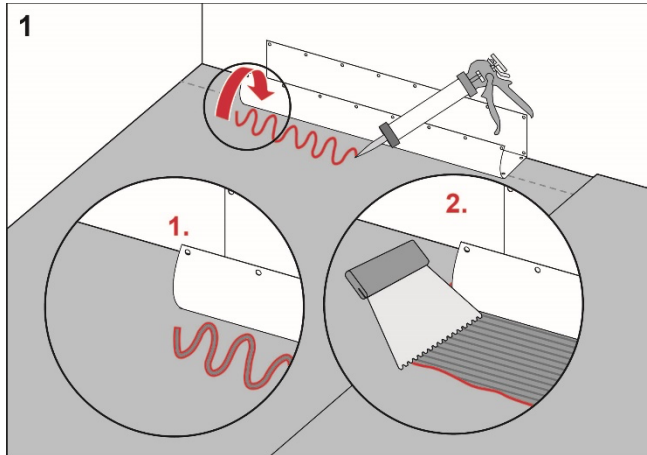
Execution

Install the TECE floor drain close to the wall in accordance with the instructions from TECE.

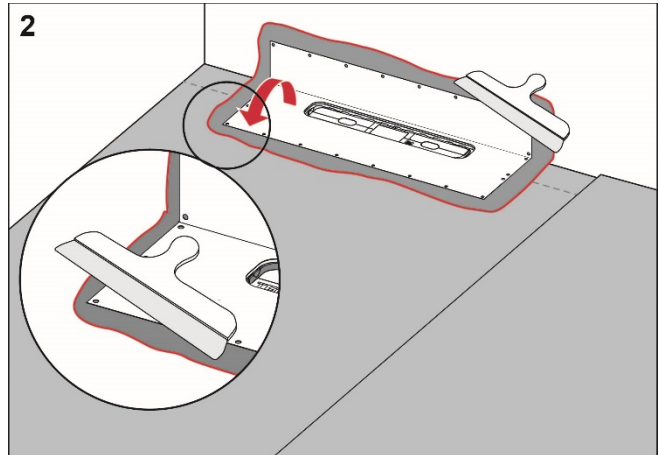
Preparation

Carefully check the factory-fitted drain collar. If it is damaged, the collar should be replaced.

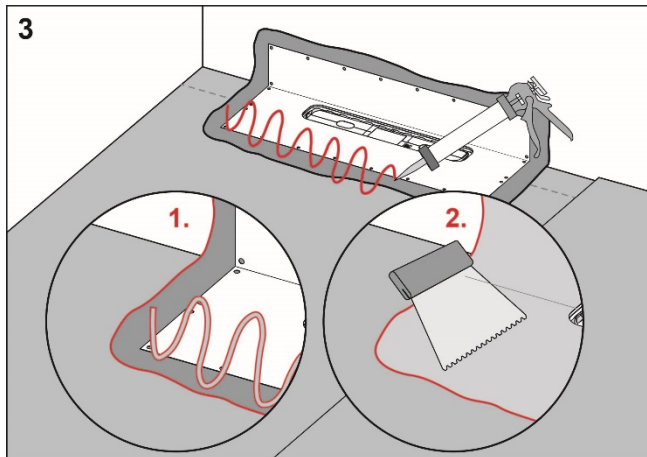
Procedure



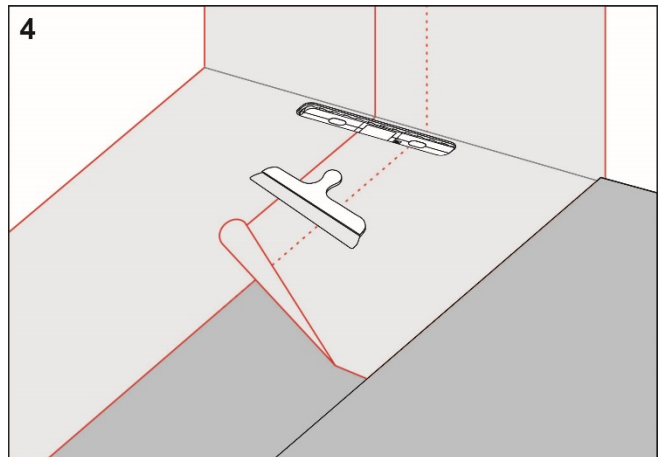
Apply CC Höganäs FB44 Tublim to the floor and wall areas which the drain collar will cover. Spread the adhesive with a fine-toothed adhesive spreader.



Unfold the collar on the floor and wall. Carefully smooth out the collar and ensure that no wrinkles or blisters occur.



Apply CC Höganäs FB44 Tublim to the drain collar and CC Höganäs FB7 Folielim to the rest of the floor and wall area.



Install CC Höganäs Folie and overlap the drain collar by a minimum of 50 mm. Seal all seams with CC Höganäs FB7 Folielim.

**RI
SE**

C900686
C900687

CC Höganäs

For more information about the
CC Höganäs Foliesystem G12b /
V12-3b:
www.cchoganas.se

Complies with the
Trade Rules of the Swedish Ceramic Tile
Council for Wet Areas
BBV 21:1