

TECE wall-mounted floor drain with Bostik VTvF-X

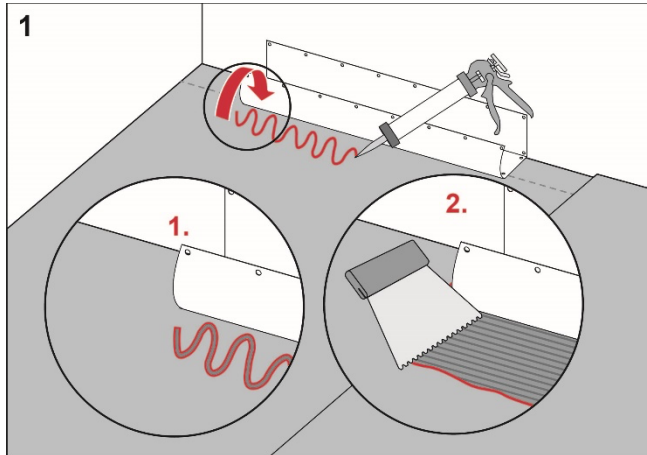
Execution

Install the TECE floor drain close to the wall in accordance with the instructions from TECE.

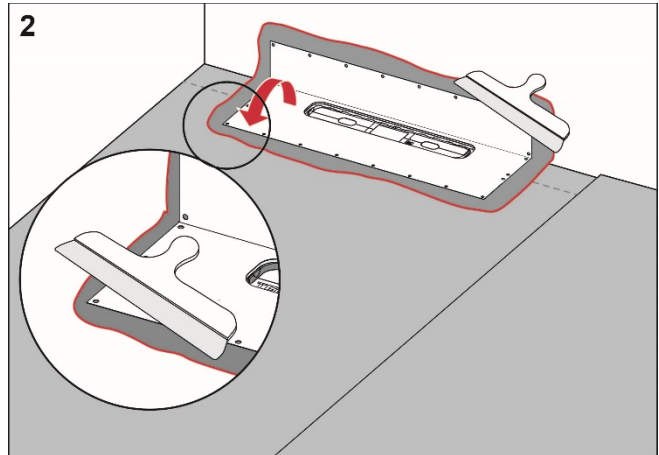
Preparation

Carefully check the factory-fitted drain collar. If it is damaged, the collar should be replaced.

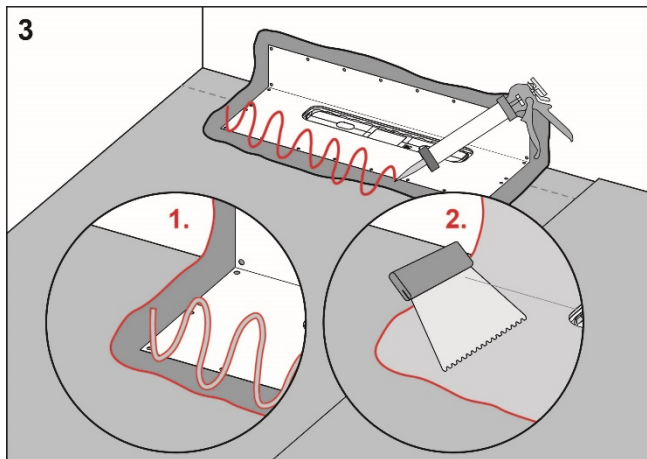
Procedure



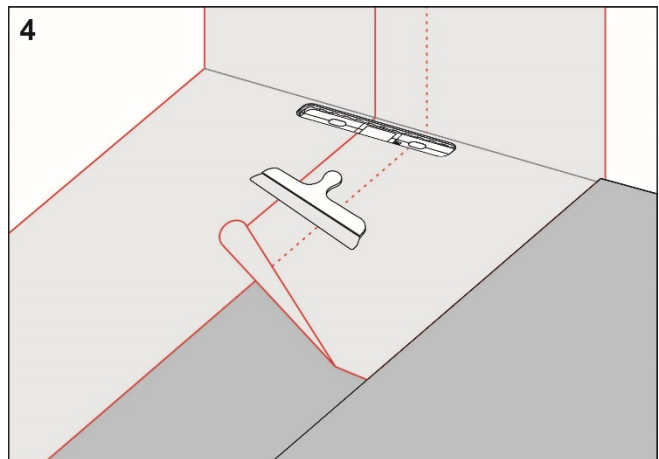
Apply Bostik Foil Seal Grab to the floor and wall areas which the drain collar will cover. Spread the adhesive with a fine-toothed adhesive spreader.



Unfold the collar on the floor and wall. Carefully smooth out the collar and ensure that no wrinkles or blisters occur.



Apply Bostik Foil Seal Grab on the drain collar and Bostik Membran, Foil Tac 1C or Foil Seal Cement on the rest of the floor and wall area.



Install Bostik Pro Folie and overlap the drain collar by a minimum of 50 mm. Seal all seams with Bostik Membran, Foil Tac 1C or Foil Seal Cement.

**RI
SE**

C900686
C900687

Bostik
smart adhesives

For more information about Bostik
VTvF-X:
www.bostik.se

Complies with the
Trade Rules of the Swedish Ceramic Tile
Council for Wet Areas
BBV 21:1