

TECE wall-mounted floor drain with Alfix foil system

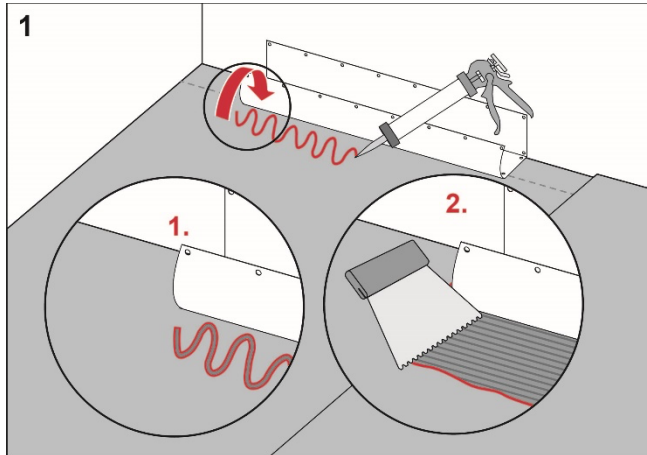
Execution

Install the TECE floor drain close to the wall in accordance with the instructions from TECE.

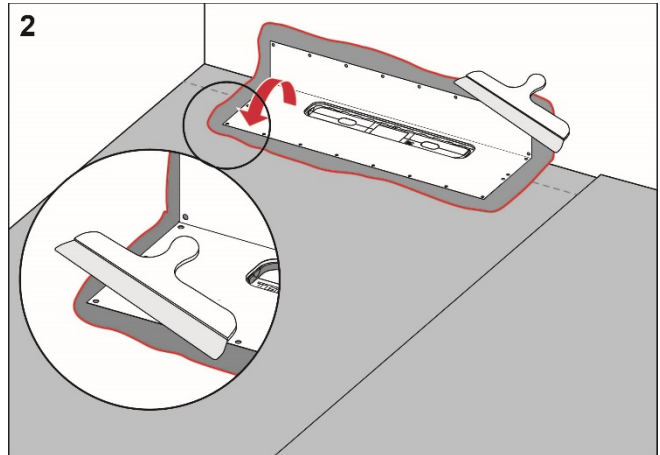
Preparation

Carefully check the factory-fitted drain collar. If it is damaged, the collar should be replaced.

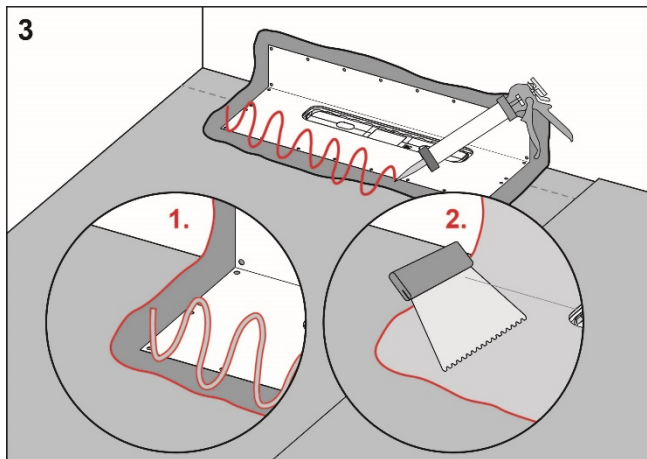
Procedure



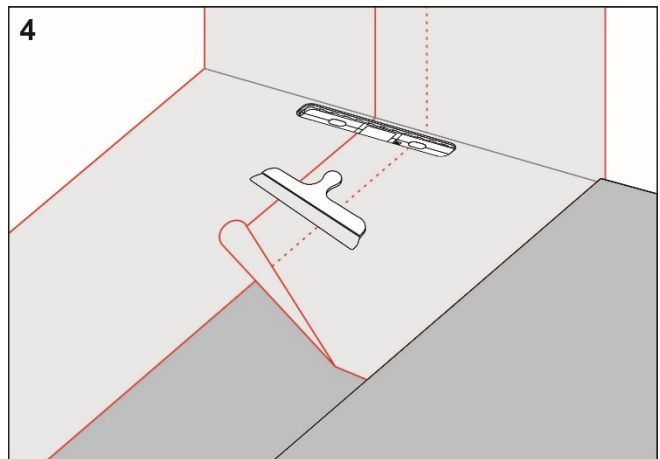
Apply Alfix 2K Tätningsmassa to the floor and wall areas which the drain collar will cover. Spread the adhesive with a fine-toothed adhesive spreader.



Unfold the collar on the floor and wall. Carefully smooth out the collar and ensure that no wrinkles or blisters occur.



Apply Alfix 2K Tätningsmassa on the drain collar and on the rest of the floor and wall area.



Install Alfix Våtrumsmatta Pro and overlap the drain collar by a minimum of 50 mm. Seal all seams with Alfix 2K Tätningsmassa.

**RI
SE**

C900686
C900687

ALFIX®

For more information about the
Alfix foil system:
www.alfix.com

Complies with the
Trade Rules of the Swedish Ceramic Tile
Council for Wet Areas
BBV 21:1